

VIAIR Corporation
15 Edelman | Irvine, CA 92618
Ph: 949-582-6868 | Fx: 949-582-6866
www.VIAIRCORP.com

VIAIR[®]
Your Vital Air Source



2008 On-Road
PRODUCTS CATALOG

P/N SMA-01A

VIAIR - YOUR VITAL AIR SOURCE

VIAIR Corporation offers the most complete line of air compressors & accessories for both the on-and off-road markets anywhere. VIAIR products are used in the O.E.M. segment, 4x4, sport air suspension and beyond and have become the industry standard for both 12- and 24-volt automotive applications worldwide. VIAIR compressors are currently being used in every corner of the globe, even in the world's harshest environments. VIAIR is recognized by its customers and peers alike as the leading manufacturer of high performance mobile pneumatic applications. Our goal is to consistently deliver performance, reliability and value to our customers; providing the ultimate Vital Air Source - the heart of any mobile pneumatic system to our valued partners worldwide.



100 Series

Pg. 05

100 Series Standard Features:

- Oil-less Design
- High Performance PTFE Piston Ring
- Stainless Steel Valves
- Moisture and Dust Resistant
- Gearless Direct Drive Motor
- Anodized Aluminum Alloy Cylinder
- Automatic Reset Thermal Overload Protector

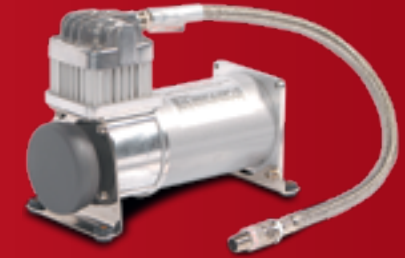


200 Series

Pg. 06

200 Series Standard Features:

- Oil-less Design
- High Performance PTFE Piston Ring
- Stainless Steel Valves
- Moisture and Dust Resistant
- Gearless Direct Drive Motor
- Anodized Aluminum Alloy Cylinder
- Automatic Reset Thermal Overload Protector
- Stainless Steel Braided Leader Hose
- Inline Check Valve
- Remote Mountable Intake Filter Assembly



300 Series

Pg. 07

300 Series Standard Features:

- Oil-less Design
- High Performance PTFE Piston Ring
- Stainless Steel Valves
- Moisture and Dust Resistant
- Gearless Direct Drive Motor
- Anodized Aluminum Alloy Cylinder
- Automatic Reset Thermal Overload Protector
- Mounting Plates with Vibration Isolators
- Stainless Steel Braided Leader Hose
- Inline Check Valve
- Remote Mountable Intake Filter Assembly



400 Series

Pg. 011

400 Series Standard Features:

- Oil-less Design
- High Performance PTFE Piston Ring
- Stainless Steel Valves
- Moisture and Dust Resistant
- Gearless Direct Drive Motor
- Anodized Aluminum Alloy Cylinder
- Automatic Reset Thermal Overload Protector
- Mounting Plates with Vibration Isolators
- Stainless Steel Braided Leader Hose
- Inline Check Valve
- Remote Mountable Intake Filter Assembly



500 Series

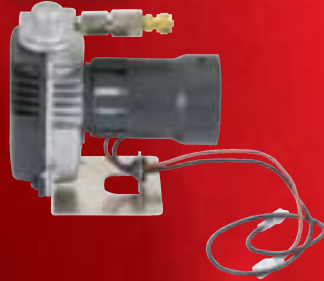
Pg. 015

500 Series Standard Features:

- Oil-less Design
- High Performance PTFE Piston Ring
- Stainless Steel Valves
- Gearless Direct Drive Motor
- Anodized Aluminum Alloy Cylinder
- Automatic Reset Thermal Overload Protector
- Mounting Plates with Vibration Isolators
- Stainless Steel Braided Leader Hose
- Inline Check Valve
- Built-in Safety Valve

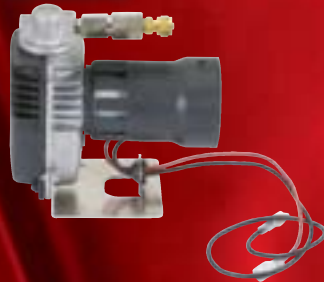


063C



063C Air Compressor
P/N 00063

065C



065C Air Compressor
P/N 00065

082C



082C Air Compressor
P/N 00082

063C Specifications:

- 12-volt
- Permanent Magnetic Motor
- Duty Cycle: **20% @ 100psi**
- Max. Working Pressure: **105psi**
- Amp Draw: **7 Amps**
- Inline Check Valve
- Dimensions: 5" L x 3" W x 5" H
- Net Weight: 1.43 lbs.

065C Specifications:

- 12-volt
- Permanent Magnetic Motor
- Duty Cycle: **15% @ 75psi**
- Max. Working Pressure: **80 PSI**
- Amp Draw: **8 Amps**
- Inline Check Valve
- Dimensions: 5" L x 3" W x 5" H
- Net Weight: 1.43 lbs.

063C PERFORMANCE DATA

PSI	CFM	A	BAR	LPM	A
0	0.79	3	0	23.0	3
10	0.52	4	1	14.0	4
20	0.48	5	2	13.0	5
30	0.45	5	3	12.0	5
40	0.43	5	4	11.0	6
50	0.41	6	5	10.0	6
60	0.39	6	6	9.5	6
70	0.36	6	7	9.0	6
80	0.34	6	8	8.5	7
90	0.34	6			
100	0.32	6			
105	0.32	7			

063C Fill Rates

0.5 Gallon Tank	Fill Rate
0 to 80psi	1 min. 5 sec.
55 to 80psi	23 seconds
0 to 105psi	1 min. 35 sec.
85 to 105psi	20 seconds

1 Gallon Tank	Fill Rate
0 to 80psi	2 min. 10 sec.
55 to 80psi	48 seconds
0 to 105psi	3 min. 10 sec.
85 to 105psi	41 seconds

065C PERFORMANCE DATA

PSI	CFM	A	BAR	LPM	A
0	0.92	5	0	26.0	5
10	0.64	6	1	17.5	6
20	0.60	6	2	16.0	7
30	0.57	7	3	15.0	7
40	0.53	7	4	14.0	8
50	0.51	8	5	13.0	8
60	0.49	8	6	12.0	8
70	0.46	8			
80	0.44	8			

065C Fill Rates

0.5 Gallon Tank	Fill Rate
0 to 80psi	52 seconds
55 to 80psi	18 seconds

1 Gallon Tank	Fill Rate
0 to 80psi	1 min. 45 sec.
55 to 80psi	38 seconds

082C Specifications:

- 12-volt
- Permanent Magnetic Motor
- Duty Cycle: **9% @ 100psi**
- Max. Working Pressure: **120 PSI**
- Amp Draw: **8 Amps**
- Inline Check Valve
- Moisture and Dust Resistant
- Inlet Filter Assembly Included
- Dimensions: 5.5" L x 2.5" W x 5.25" H
- Net Weight: 2.25 lbs.

082C PERFORMANCE DATA

PSI	CFM	A	BAR	LPM	A
0	1.13	5	0	32.0	5
10	0.71	6	1.0	19.0	6
20	0.64	6	2.0	17.0	7
30	0.60	7	3.0	15.5	7
40	0.57	7	4.0	14.0	8
50	0.53	7	5.0	12.5	8
60	0.50	8	6.0	11.5	8
70	0.46	8	7.0	11.0	8
80	0.44	8	8.0	10.0	8
90	0.41	8	9.0	9.0	8
100	0.39	8			
110	0.35	8			
120	0.34	8			

082C Fill Rates

0.5 Gallon Tank	Fill Rate
0 to 105psi	1 min. 14 seconds
85 to 105psi	17 seconds

1 Gallon Tank	Fill Rate
0 to 105psi	2 min. 28 sec.
85 to 105psi	35 seconds

090C Specifications:

- 12-volt
- Permanent Magnetic Motor
- Duty Cycle: **9% @ 100psi**
- Max. Working Pressure: **120 PSI**
- Amp Draw: **10 Amps**
- Inline Check Valve
- Moisture and Dust Resistant
- Dimensions: 6" L x 2.1" W x 4.3" H
- Net Weight: 2.5 lbs.

092C Specifications:

- 12-volt
- Permanent Magnetic Motor
- Duty Cycle: **9% @ 100psi**
- Max. Working Pressure: **120 PSI**
- Amp Draw: **10 Amps**
- Inline Check Valve
- Moisture and Dust Resistant
- Inlet Filter Assembly Included
- Dimensions: 7.5" L x 2.1" W x 4.3" H
- Net Weight: 2.5 lbs.

095C Specifications:

- 12-volt
- Permanent Magnetic Motor
- Duty Cycle: **9% @ 100psi**
- Max. Working Pressure: **120 PSI**
- Amp Draw: **10 Amps**
- Inline Check Valve
- Moisture and Dust Resistant
- Omega Style Bracket
- Dimensions: 6" L x 2.1" W x 4.3" H
- Net Weight: 2.5 lbs.

090C, 092C & 095C PERFORMANCE DATA

PSI	CFM	A	BAR	LPM	A
0	1.03	7	0	29.0	7
10	0.71	8	1	19.0	8
20	0.67	8	2	18.0	9
30	0.64	9	3	16.5	9
40	0.60	9	4	15.0	10
50	0.57	9	5	13.5	10
60	0.53	10	6	12.5	10
70	0.48	10	7	11.0	9
80	0.45	10	8	10.0	9
90	0.43	10			
100	0.39	9			
110	0.36	9			
120	0.34	9			

090C, 092C & 095C Fill Rates

0.5 Gallon Tank	Fill Rate
0 to 80psi	48 seconds
55 to 80psi	16 seconds
0 to 105psi	1 min. 8 sec.
85 to 105psi	14 seconds
0 to 120psi	1 min. 23 sec.
90 to 120psi	25 seconds

1 Gallon Tank	Fill Rate
0 to 80psi	1 min. 42 sec.
55 to 80psi	35 seconds
0 to 105psi	2 min. 20 sec.
85 to 105psi	30 seconds
0 to 120psi	3 min. 4 sec.
90 to 120psi	54 seconds

097C & 098C Specifications:

- 12-volt
- Permanent Magnetic Motor
- Duty Cycle: **10% @ 100psi**
- Max. Working Pressure: **130 PSI**
- Amp Draw: **12 Amps**
- Inline Check Valve
- Moisture and Dust Resistant
- Omega Style Bracket (098C)
- Dimensions: 6" L x 2.1" W x 4.3" H
- Net Weight: 2.5 lbs.

097C & 098C PERFORMANCE DATA

PSI	CFM	A	BAR	LPM	A
0	1.27	7	0	36.0	7
10	1.17	9	1	31.5	9
20	1.06	10	2	28.5	10
30	1.01	10	3	25.0	11
40	0.92	11	4	23.0	12
50	0.85	12	5	20.5	12
60	0.81	12	6	18.5	12
70	0.74	12	7	16.0	11
80	0.69	12	8	13.5	11
90	0.64	12	9	11.5	10
100	0.57	11	10	9.5	10
110	0.51	11			
120	0.46	11			
130	0.41	10			

097C & 098C Fill Rates

0.5 Gallon Tank	Fill Rate
0 to 105psi	51 seconds
85 to 105psi	15 seconds
0 to 120psi	1 min. 3 sec.
90 to 120psi	25 seconds

1 Gallon Tank	Fill Rate
0 to 105psi	1 min. 31 sec.
85 to 105psi	29 seconds
0 to 120psi	1 min. 58 sec.
90 to 120psi	49 seconds

095C and 098C
Includes Mounting Hardware

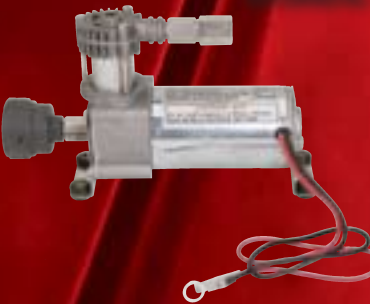


090C



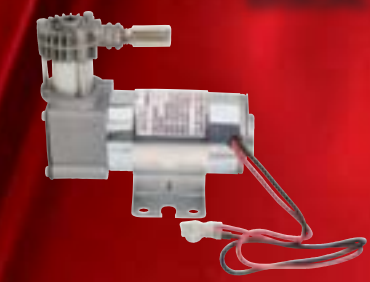
090C Air Compressor
P/N 00090

092C



092C Air Compressor
P/N 00092

095C



095C Air Compressor
P/N 00095

097C

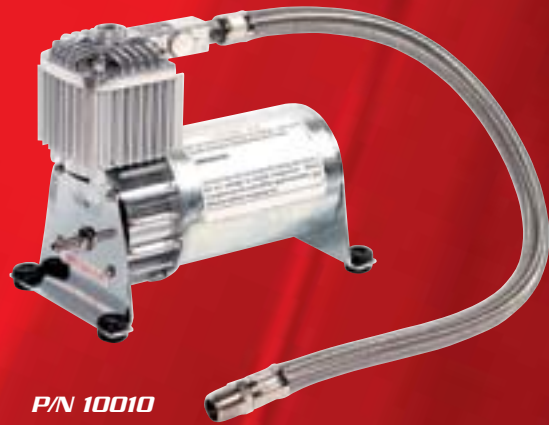


097C Air Compressor
P/N 00097

098C



098C Air Compressor
P/N 00098



P/N 10010

100C comes with a 1.5 ft. stainless steel braided leader hose with 1/4" NPT swivel male fitting hose end and rubber isolated mounting feet as well as insulated electric terminals.

*Must be used with a 130 PSI or lower pressure, non-adjustable pressure switch when used with an air tank.



100C Air Compressor

100C Specifications:

- 12-volt
- Permanent Magnetic Motor
- Duty Cycle: **15% @ 100 PSI**
- Max. Working Pressure: **130 PSI**
- Amp Draw: **14 Amps**
- Min. Ambient Temp: -40° F
- Max. Ambient Temp: 158° F
- Stainless Steel Braided Leader Hose
- Dimensions: 6.25" L x 3.3" W x 4.9" H
- Net Weight: 3.5 lbs.

PERFORMANCE DATA

PSI	CFM	A	BAR	LPM	A
0	1.17	10	0	33.0	10
10	0.86	11	1	23.5	11
20	0.82	12	2	22.0	12
30	0.78	12	3	20.5	13
40	0.74	12	4	19.5	13
50	0.70	13	5	18.0	13
60	0.67	13	6	17.0	14
70	0.63	13	7	16.0	14
80	0.61	13	8	15.0	14
90	0.59	14	9	14.0	13
100	0.57	14			
110	0.55	14			
120	0.51	13			
130	0.49	13			

FILL RATES

0.5 Gallon Tank	Fill Rate
0 to 105 PSI	45 seconds
85 to 105 PSI	9 seconds
0 to 120 PSI	55 seconds
90 to 120 PSI	15 seconds

1.0 Gallon Tank	Fill Rate
0 to 105 PSI	1 min. 28 sec.
85 to 105 PSI	19 seconds
0 to 120 PSI	1 min. 46 sec.
90 to 120 PSI	30 seconds

P/N 10010 (without Omega Bracket)
P/N 10019 (with Omega Bracket)

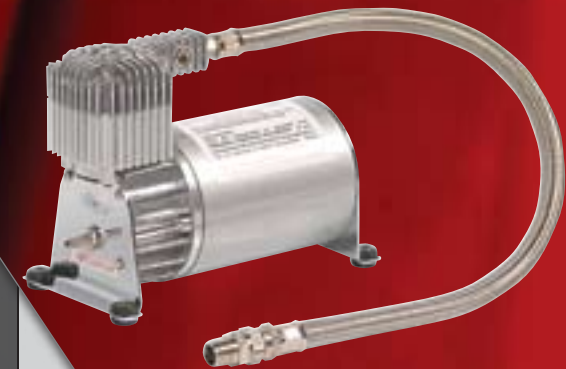


P/N 10019

100C - P/N 10019 with omega-style bracket is a bare compressor that comes standard with a chrome motor housing and chrome end plates. Insulated wiring is pre-installed. P/N 10019 does not come equipped with a leader hose but does come with an inline check valve.

*Must be used with a 130 PSI or lower pressure, non-adjustable pressure switch when used with an air tank.

OMEGA BRACKET MOUNTING HARDWARE



275C Air Compressor
P/N 27520

275C features include a standard 1/4" stainless steel braided leader hose with inline check valve and insulated wiring for simple installation.

*Must be used with a 150 PSI or lower pressure, non adjustable pressure switch when used with an air tank.

275C Specifications:

- 12-volt
- Permanent Magnetic Motor
- Duty Cycle: **25% @ 100 PSI**
- Max. Working Pressure: **150 PSI**
- Amp Draw: **18 Amps**
- Min. Ambient Temp: -40° F
- Max. Ambient Temp: 158° F
- Stainless Steel Braided Leader Hose
- Dimensions: 6.5" L x 3.5" W x 4.5" H
- Net Weight: 5.1 lbs.

PERFORMANCE DATA

PSI	CFM	A	BAR	LPM	A
0	2.03	10	0	57.5	10
10	1.17	12	1	32.0	13
20	1.11	13	2	30.0	14
30	1.04	15	3	28.5	16
40	1.01	15	4	26.5	16
50	0.97	16	5	24.5	17
60	0.92	16	6	22.5	17
70	0.88	17	7	21.5	18
80	0.83	17	8	20.0	18
90	0.79	17	9	18.5	18
100	0.76	18	10	17.0	17
110	0.72	18			
120	0.69	18			
130	0.65	18			
140	0.62	17			
150	0.57	17			

FILL RATES

1.0 Gallon Tank	Fill Rate
0 to 105 PSI	1 min. 05 sec.
0 to 145 PSI	1 min. 39 sec.
85 to 105 PSI	14 seconds
110 to 145 PSI	28 seconds

2.5 Gallon Tank	Fill Rate
0 to 105 PSI	2 min. 29 sec.
0 to 145 PSI	4 min. 7 sec.
85 to 105 PSI	36 seconds
110 to 145 PSI	1 min. 28 sec.

280C Specifications:

- 12-volt
- Permanent Magnetic Motor
- Duty Cycle: **30% @ 100 PSI**
- Max. Working Pressure: **150 PSI**
- Amp Draw: **16 Amps**
- Min. Ambient Temp: -40° F
- Max. Ambient Temp: 158° F
- Stainless Steel Braided Leader Hose
- Dimensions: 7.8" L x 3.95" W x 6.35" H
- Net Weight: 6.6 lbs.

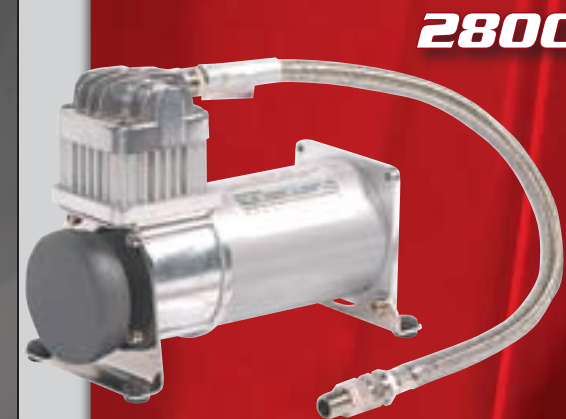
PERFORMANCE DATA

PSI	CFM	A	BAR	LPM	A
0	1.31	8	0	37.0	8
10	1.29	9	1	33.0	10
20	1.15	10	2	31.5	11
30	1.11	12	3	29.0	13
40	1.04	13	4	26.5	14
50	0.99	13	5	24.0	14
60	0.92	14	6	22.0	15
70	0.87	14	7	21.0	15
80	0.81	15	8	19.5	16
90	0.76	15	9	17.5	15
100	0.74	15	10	15.5	15
110	0.71	15			
120	0.67	16			
130	0.62	15			
140	0.57	15			
150	0.51	15			

FILL RATES

2.5 Gallon Tank	Fill Rate
0 to 105 PSI	2 min. 55 sec.
0 to 145 PSI	4 min. 41 sec.
85 to 105 PSI	44 seconds
110 to 145 PSI	1 min. 36 sec.

5.0 Gallon Tank	Fill Rate
0 to 105 PSI	5 min. 26 sec.
0 to 145 PSI	8 min. 52 sec.
85 to 105 PSI	1 min. 17 sec.
110 to 145 PSI	2 min. 52 sec.



280C Air Compressor
P/N 28020

280C is rated to 150 PSI maximum working pressure. Features include a standard 1/4" stainless steel braided leader hose with inline check valve and insulated wiring for simple installation.

*Must be used with a 150 PSI or lower pressure, non adjustable pressure switch when used with an air tank.

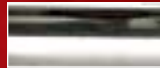


325C-12V are compressors that work with low amp draw. Features include a standard 1/4" stainless steel braided leader hose with check valve and insulated wiring for simple installation.

325C-24V is a compressor that runs on 24 volts and uses a maximum of 10 amps. Features include a standard 1/4" stainless steel braided leader hose with inline check valve and insulated wiring for simple installation.

*Must be used with a 150 PSI or lower pressure, non-adjustable pressure switch when used with an air tank.

Chrome



Silver



325C Air Compressor

P/N 32530 (Silver) P/N 32533 (Chrome) P/N 32538 (24 Volt Silver)



325C Specifications: 12-Volt & 24-Volt

- 12- and 24-volt
- Permanent Magnetic Motor
- Duty Cycle: **33% @ 100 PSI**
- Max. Working Pressure: **150 PSI**
- Amp Draw: **19 Amps (12V)**
10 Amps (24V)
- Min. Ambient Temp: -40° F
- Max. Ambient Temp: 158° F
- Stainless Steel Braided Leader Hose
- Dimensions: 8" L x 4" W x 7.05" H
- Net Weight: 6.95 lbs.

PERFORMANCE DATA

PSI	12V		24V		BAR	12V		24V	
	CFM	A	CFM	A		LPM	A	LPM	A
0	1.77	9	1.43	6	0	50.0	9	40.5	6
10	1.48	11	1.30	6	1	40.0	12	35.0	7
20	1.34	13	1.18	7	2	36.5	14	32.5	8
30	1.27	14	1.14	8	3	34.0	15	30.5	9
40	1.22	15	1.09	9	4	32.0	16	29.0	9
50	1.17	16	1.06	9	5	30.0	17	27.0	10
60	1.11	17	1.02	9	6	28.5	17	25.5	10
70	1.06	17	0.97	9	7	27.0	18	24.0	10
80	1.02	17	0.92	10	8	25.5	19	23.0	10
90	0.99	18	0.88	10	9	24.0	19	22.0	10
100	0.95	18	0.85	10	10	22.0	19	21.5	10
110	0.92	19	0.83	10					
120	0.88	19	0.79	10					
130	0.85	19	0.78	10					
140	0.79	19	0.74	10					
150	0.76	19	0.71	10					

FILL RATES

2.5 Gallon Tank	Fill Rate 12V	Fill Rate 24V
0 to 105 PSI	2 min. 14 sec.	2 min. 35 sec.
0 to 145 PSI	3 min. 30 sec.	4 min. 5 sec.
85 to 105 PSI	26 seconds	32 seconds
110 to 145 PSI	1 min. 1 sec.	1 min. 24 sec.
5.0 Gallon Tank	Fill Rate 12V	Fill Rate 24V
0 to 105 PSI	4 min. 31 sec.	5 min. 1 sec.
0 to 145 PSI	6 min. 51 sec.	7 min. 52 sec.
85 to 105 PSI	55 seconds	1 min. 8 sec.
110 to 145 PSI	2 min. 4 sec.	2 min. 31 sec.



330C-12V and 330C-24V features include a standard 1/4" stainless steel braided leader hose with inline check valve and insulated wiring for simple installation.

*Must be used with a 150 PSI or lower pressure, non-adjustable pressure switch

Tech Tip: Always install compressor(s) higher than the air reservoir tank's intake port to keep moisture from leaking into the compressor's head.

330C Air Compressor

P/N 33030 (12 Volt) P/N 33038 (24 Volt)

330C Specifications: 12-Volt & 24-Volt

- 12- and 24-volt
- Permanent Magnetic Motor
- Duty Cycle: **100% @ 100 PSI**
- Max. Working Pressure: **150 PSI**
- Amp Draw: **12 Amps (12V)**
7 Amps (24V)
- Min. Ambient Temp: -40° F
- Max. Ambient Temp: 158° F
- Stainless Steel Braided Leader Hose
- Dimensions: 9" L x 4" W x 7" H
- Net Weight: 8 lbs.

PERFORMANCE DATA

PSI	12V		24V		BAR	12V		24V	
	CFM	A	CFM	A		LPM	A	LPM	A
0	1.06	6	1.16	4	0	30.0	6	34.0	4
10	0.88	7	0.98	5	1	24.0	8	27.0	5
20	0.81	8	0.95	5	2	22.0	9	25.0	6
30	0.78	9	0.88	6	3	21.0	9	22.0	6
40	0.76	9	0.81	6	4	20.0	10	21.0	6
50	0.72	10	0.78	6	5	18.0	11	20.0	7
60	0.69	10	0.74	6	6	17.5	11	19.0	7
70	0.65	11	0.71	7	7	16.5	12	18.0	7
80	0.64	11	0.69	7	8	15.5	12	16.5	7
90	0.62	11	0.66	7	9	14.5	12	15.0	7
100	0.60	12	0.63	7	10	13.0	12	13.5	7
110	0.57	12	0.60	7					
120	0.53	12	0.57	7					
130	0.51	12	0.53	7					
140	0.48	12	0.49	7					
150	0.44	12	0.46	7					

FILL RATES

2.5 Gallon Tank	Fill Rate 12V	Fill Rate 24V
0 to 105 PSI	4 min. 0 sec.	3 min. 9 sec.
0 to 145 PSI	6 min. 23 sec.	5 min. 3 sec.
85 to 105 PSI	50 seconds	40 seconds
110 to 145 PSI	1 min. 44 sec.	1 min. 31 sec.
5.0 Gallon Tank	Fill Rate 12V	Fill Rate 24V
0 to 105 PSI	7 min. 24 sec.	6 min. 42 sec.
0 to 145 PSI	12 min. 12 sec.	10 min. 12 sec.
85 to 105 PSI	1 min. 30 sec.	1 min. 22 sec.
110 to 145 PSI	3 min. 12 sec.	3 min. 3 sec.



350C operate using low amp draw so they're versatile for many mobile pneumatic applications. Features include a standard 1/4" stainless steel braided leader hose with inline check valve and insulated wiring for simple installation.

*Must be used with a 150 PSI or lower pressure, non-adjustable pressure switch when used with an air tank.

Tech Tip:

We recommend using a maximum five-gallon air tank with each VIAIR compressor. Larger tank volumes require multiple compressors to maintain performance.

Chrome



Silver



P/N 35030 (Silver) P/N 35033 (Chrome) 350C Air Compressor

350C Specifications:

- 12-volt
- Permanent Magnetic Motor
- Duty Cycle: **100% @ 100 PSI**
- Max. Working Pressure: **150 PSI**
- Amp Draw: **17 Amps**
- Min. Ambient Temp: -40° F
- Max. Ambient Temp: 158° F
- Stainless Steel Braided Leader Hose
- Dimensions: 9"L x 4"W x 7"H
- Net Weight: 8 lbs.

PERFORMANCE DATA

PSI	CFM	A	BAR	LPM	A
0	1.48	9	0	42.0	9
10	1.20	10	1	33.5	11
20	1.16	12	2	31.5	13
30	1.11	13	3	29.0	14
40	1.04	14	4	27.0	15
50	0.99	15	5	25.5	16
60	0.95	15	6	24.0	16
70	0.92	16	7	22.5	17
80	0.88	16	8	21.0	17
90	0.85	16	9	19.0	17
100	0.81	17	10	17.0	17
110	0.78	17			
120	0.72	17			
130	0.67	17			
140	0.62	17			
150	0.57	17			

FILL RATES

2.5 Gallon Tank	Fill Rate
0 to 105 PSI	2 min. 53 sec.
0 to 145 PSI	4 min. 27 sec.
85 to 105 PSI	40 seconds
110 to 145 PSI	1 min. 23 sec.
5.0 Gallon Tank	Fill Rate
0 to 105 PSI	5 min. 36 sec.
0 to 145 PSI	8 min. 41 sec.
85 to 105 PSI	1 min. 12 sec.
110 to 145 PSI	2 min. 42 sec.

380C Specifications:

- 12-volt
- Permanent Magnetic Motor
- Duty Cycle: **100% @ 100 PSI**
55% @ 200 PSI
- Max. Working Pressure: **200 PSI**
- Amp Draw: **16 Amps**
- Min. Ambient Temp: -40° F
- Max. Ambient Temp: 158° F
- Stainless Steel Braided Leader Hose
- Dimensions: 9"L x 4"W x 7"H
- Net Weight: 8 lbs.

PERFORMANCE DATA

PSI	CFM	A	BAR	LPM	A
0	1.49	8	0	42.0	8
10	1.17	10	1	32.5	10
20	1.13	11	2	31.0	12
30	1.09	12	3	29.0	13
40	1.02	13	4	27.0	14
50	0.99	13	5	26.0	14
60	0.95	14	6	24.5	15
70	0.92	14	7	23.0	15
80	0.88	14	8	21.0	15
90	0.85	15	9	19.0	15
100	0.81	15	10	16.5	15
110	0.78	15	11	15.5	15
120	0.71	15	12	14.0	15
130	0.67	15	13	12.5	15
140	0.60	15	14	11.5	15
150	0.57	15			
160	0.55	16			
170	0.51	15			
180	0.48	15			
190	0.44	15			
200	0.40	15			

FILL RATES

2.5 Gallon Tank	Fill Rate
0 to 145 PSI	3 min. 48 sec.
0 to 200 PSI	6 min. 10 sec.
110 to 145 PSI	1 min. 12 sec.
165 to 200 PSI	1 min. 40 sec.
5.0 Gallon Tank	Fill Rate
0 to 145 PSI	8 min. 35 sec.
0 to 200 PSI	14 min. 45 sec.
110 to 145 PSI	2 min. 42 sec.
165 to 200 PSI	3 min. 30 sec.

380C is a truly-rated continuous duty, 12-volt, 200 PSI compressor. It is capable of filling a 5-gallon tank from 165psi to 200psi in 3 1/2 minutes consistently, while never pulling more than 16 amps of power (@ 13.8 volts). It is the choice for those who wish to keep the strain on their vehicles charging systems to a minimum. Features include a standard 1/4" stainless steel braided leader hose with inline check valve and insulated wiring for simple installation.

*Must be used with a 200 PSI or lower pressure, non-adjustable pressure switch when used with an air tank.

Tech Tip:

Choose a compressor mounting location that is as cool as possible and away from heat sources. This will help the compressor run cooler and last longer.

P/N 38033 380C Air Compressor



400C is a 33% duty cycle compressor that works quickly and efficiently putting out a massive 2.54 CFM flow at zero PSI head pressure. Features include a standard 1/4" stainless steel braided leader hose with inline check valve and insulated wiring for simple installation.

*Must be used with a 150 PSI or lower pressure, non-adjustable pressure switch when used with an air tank.

400C Air Compressor
P/N 40040

400C Specifications:

- 12-volt
- Permanent Magnetic Motor
- Duty Cycle: **33% @ 100 PSI**
- Max. Working Pressure: **150 PSI**
- Amp Draw: **26 Amps**
- Min. Ambient Temp: -40° F
- Max. Ambient Temp: 158° F
- Stainless Steel Braided Leader Hose
- Dimensions: 9"L x 4"W x 7"H
- Net Weight: 8 lbs.

PERFORMANCE DATA

PSI	CFM	A	BAR	LPM	A
0	2.54	16	0	72.0	16
10	2.26	18	1	63.5	19
20	2.12	21	2	57.5	22
30	1.94	22	3	52.5	23
40	1.84	23	4	48.0	25
50	1.70	24	5	45.5	26
60	1.62	25	6	42.5	26
70	1.55	25	7	38.0	26
80	1.48	26	8	34.5	26
90	1.41	26	9	29.0	25
100	1.27	26	10	24.5	25
110	1.20	26			
120	1.09	26			
130	0.95	25			
140	0.85	25			
150	0.71	25			

FILL RATES

2.5 Gallon Tank	Fill Rate
0 to 105 PSI	1 min. 27 sec.
0 to 145 PSI	2 min. 20 sec.
85 to 105 PSI	17 seconds
110 to 145 PSI	48 seconds
5.0 Gallon Tank	Fill Rate
0 to 105 PSI	2 min. 55 sec.
0 to 145 PSI	4 min. 50 sec.
85 to 105 PSI	35 seconds
110 to 145 PSI	1 min. 40 sec.



420C features include horizontal cooling fins and a trapezoidal head design, a standard 3/8" stainless steel braided leader hose with inline check valve and insulated wiring for simple installation.

*Must be used with a 150 PSI or lower pressure non-adjustable pressure switch when used with an air tank.

420C Air Compressor
P/N 42042 (Chrome)
P/N 42040 (Pewter)

420C Specifications:

- 12-volt
- Permanent Magnetic Motor
- Duty Cycle: **33% @ 100 PSI**
- Max. Working Pressure: **150 PSI**
- Amp Draw: **26 Amps**
- Min. Ambient Temp: -40° F
- Max. Ambient Temp: 158° F
- Stainless Steel Braided Leader Hose
- Dimensions: 10"L x 4.3"W x 6.5"H
- Net Weight: 8 lbs.

PERFORMANCE DATA

PSI	CFM	A	BAR	LPM	A
0	2.54	16	0	72.0	16
10	2.26	18	1	63.5	19
20	2.12	21	2	57.5	22
30	1.94	22	3	52.5	23
40	1.84	23	4	48.0	25
50	1.70	24	5	45.5	26
60	1.62	25	6	42.5	26
70	1.55	25	7	38.0	26
80	1.48	26	8	34.5	26
90	1.41	26	9	29.0	25
100	1.27	26	10	24.5	25
110	1.20	26			
120	1.09	26			
130	0.95	25			
140	0.85	25			
150	0.71	25			

FILL RATES

2.5 Gallon Tank	Fill Rate
0 to 105 PSI	1 min. 27 sec.
0 to 145 PSI	2 min. 20 sec.
85 to 105 PSI	17 seconds
110 to 145 PSI	48 seconds
5.0 Gallon Tank	Fill Rate
0 to 105 PSI	2 min. 55 sec.
0 to 145 PSI	4 min. 50 sec.
85 to 105 PSI	35 seconds
110 to 145 PSI	1 min. 40 sec.



450C-12V features include a standard 1/4" stainless steel braided leader hose with inline check valve and insulated wiring for installation.

450C-24V is a continuous duty cycle, 24-volt compressor. Rated to 150 PSI maximum working pressure, it is the compressor of choice for many 24-volt mobile pneumatic applications. Features include a standard 1/4" stainless steel braided leader hose with inline check valve and insulated wiring for simple installation.

*Both compressors must be used with a 150 PSI or lower pressure, non-adjustable pressure switch when used with an air tank.

450C Air Compressor
P/N 45048 (24 Volt)
P/N 45040 (12 Volt)

450C Specifications:

12-Volt & 24-Volt

- 12- and 24-volt
- Permanent Magnetic Motor
- Duty Cycle: **100% @ 100 PSI**
- Max. Working Pressure: **150 PSI**
- Amp Draw: **19 Amps (12V)**
11 Amps (24V)
- Min. Ambient Temp: -40° F
- Max. Ambient Temp: 158° F
- Stainless Steel Braided Leader Hose
- Dimensions: 11.25"L x 4"W x 6.75"H
- Net Weight: 9.75 lbs.

PERFORMANCE DATA

PSI	12V		24V		BAR	12V		24V	
	CFM	A	CFM	A		LPM	A	LPM	A
0	1.66	11	1.77	6	0	47.0	11	50.0	6
10	1.55	12	1.62	7	1	42.0	13	44.5	8
20	1.41	13	1.52	8	2	38.5	14	41.0	9
30	1.34	15	1.43	9	3	36.5	16	37.5	10
40	1.31	16	1.34	9	4	34.0	17	34.5	10
50	1.27	16	1.27	10	5	30.5	18	31.5	11
60	1.18	17	1.20	10	6	28.0	18	29.0	11
70	1.09	18	1.13	11	7	26.5	19	27.0	11
80	1.04	18	1.08	11	8	25.0	19	25.0	11
90	0.97	18	0.99	11	9	23.0	18	23.0	11
100	0.94	19	0.97	11	10	21.0	18	21.5	11
110	0.90	19	0.92	11					
120	0.86	19	0.87	11					
130	0.81	18	0.81	11					
140	0.76	18	0.78	11					
150	0.72	18	0.74	11					

FILL RATES

2.5 Gallon Tank	Fill Rate 12V	Fill Rate 24V
0 to 105 PSI	1 min. 55 sec.	1 min. 48 sec.
0 to 145 PSI	3 min. 2 sec.	2 min. 50 sec.
85 to 105 PSI	28 seconds	27 seconds
110 to 145 PSI	59 seconds	50 seconds
5.0 Gallon Tank	Fill Rate 12V	Fill Rate 24V
0 to 105 PSI	4 min. 20 sec.	3 min. 48 sec.
0 to 145 PSI	6 min. 40 sec.	5 min. 57 sec.
85 to 105 PSI	58 seconds	49 seconds
110 to 145 PSI	2 min. 11 sec.	1 min. 51 sec.



460C features include horizontal cooling fins and a trapezoidal head design, a standard 3/8" stainless steel braided leader hose with inline check valve and insulated wiring for simple installation.

*Must be used with a 150 PSI or lower pressure, non-adjustable pressure switch when used with an air tank.

Tech Tip: Make sure that your engine is running while you are running your air compressors, to ensure your air compressors are getting enough supply voltage.

Pewter



Chrome



460C Air Compressor

P/N 46040 (Pewter) P/N 46043 (Chrome)

460C Specifications:

- 12-volt
- Permanent Magnetic Motor
- Duty Cycle: **100% @ 100 PSI**
- Max. Working Pressure: **150 PSI**
- Amp Draw: **19 Amps**
- Min. Ambient Temp: -40° F
- Max. Ambient Temp: 158° F
- Stainless Steel Braided Leader Hose
- Dimensions: 11.25" L x 4" W x 6.75" H
- Net Weight: 9.75 lbs.

PERFORMANCE DATA

PSI	CFM	A	BAR	LPM	A
0	1.66	11	0	47.0	11
10	1.55	12	1	42.0	13
20	1.41	13	2	38.5	14
30	1.34	15	3	36.5	16
40	1.31	16	4	34.0	17
50	1.27	16	5	30.5	18
60	1.18	17	6	28.0	18
70	1.09	18	7	26.5	19
80	1.04	18	8	25.0	19
90	0.97	18	9	23.0	18
100	0.94	19	10	21.0	18
110	0.90	19			
120	0.86	19			
130	0.81	18			
140	0.76	18			
150	0.72	18			

FILL RATES

2.5 Gallon Tank	Fill Rate
0 to 105 PSI	1 min. 55 sec.
0 to 145 PSI	3 min. 2 sec.
85 to 105 PSI	28 seconds
110 to 145 PSI	59 seconds
5.0 Gallon Tank	Fill Rate
0 to 105 PSI	4 min. 20 sec.
0 to 145 PSI	6 min. 40 sec.
85 to 105 PSI	58 seconds
110 to 145 PSI	2 min. 11 sec.

480C Specifications:

- 12-volt
- Permanent Magnetic Motor
- Duty Cycle: **100% @ 100 PSI**
50% @ 200 PSI
- Max. Working Pressure: **200 PSI**
- Amp Draw: **20 Amps**
- Min. Ambient Temp: -40° F
- Max. Ambient Temp: 158° F
- Stainless Steel Braided Leader Hose
- Dimensions: 11.5" L x 4.3" W x 6.5" H
- Net Weight: 11 lbs.

PERFORMANCE DATA

PSI	CFM	A	BAR	LPM	A
0	1.76	10	0	50.0	10
10	1.66	12	1	46.0	13
20	1.59	14	2	43.0	15
30	1.52	15	3	40.5	17
40	1.45	16	4	38.5	18
50	1.41	17	5	35.5	19
60	1.34	18	6	33.0	19
70	1.27	18	7	31.5	19
80	1.20	19	8	29.5	20
90	1.16	19	9	27.0	20
100	1.13	19	10	25.0	19
110	1.06	20	11	23.0	19
120	1.02	20	12	20.5	19
130	0.95	20	13	18.0	18
140	0.92	19	14	15.5	18
150	0.85	19	15	14.0	17
160	0.81	19	16	12.0	16
170	0.74	19	17	11.0	15
180	0.70	19			
190	0.63	18			
200	0.56	18			

FILL RATES

2.5 Gallon Tank	Fill Rate
0 to 145 PSI	2 min. 29 sec.
0 to 200 PSI	5 min. 2 sec.
110 to 145 PSI	57 seconds
165 to 200 PSI	1 min. 23 sec.
5.0 Gallon Tank	Fill Rate
0 to 145 PSI	6 min. 2 sec.
0 to 200 PSI	10 min. 8 sec.
110 to 145 PSI	1 min. 55 sec.
165 to 200 PSI	2 min. 20 sec.

480C features include horizontal cooling fins and a trapezoidal head design, a standard 3/8" stainless steel braided leader hose with inline check valve and insulated wiring for simple installation.

*Must be used with a 200 PSI or lower pressure, non-adjustable pressure switch when used with an air tank.

Tech Tip: Always use a pressure switch that will shut off the compressor at or before its maximum working pressure. Never use adjustable pressure switches; they will allow your compressor to exceed its maximum working pressure.

Pewter



Chrome



480C Air Compressor

P/N 48040 (Pewter) P/N 48043 (Chrome)



500C-12V is a moisture and dust resistant powerhouse for creating air pressure. From startup, it produces 2.93 CFM and is strong throughout its performance band. Features include a standard 3/8" stainless steel braided leader hose with inline check valve, remote mountable intake filter assembly and insulated wiring for simple installation.

500C-24V is a waterproof 24-volt compressor that is capable of producing a full 3.00 CFM at zero head pressure and will pull no more than 17 amps of power through its range of performance. Features of the 500C, 24-volt unit include a standard 3/8" stainless steel braided leader hose with inline check valve, remote mountable intake filter assembly.

*Both compressors must be used with a 150 PSI or lower pressure, non-adjustable pressure switch when used with an air tank.

500C Air Compressor P/N 50059 (24 Volt) P/N 50050 (12 Volt)

500C Specifications:

- 12- and 24-volt
- Permanent Magnetic Motor
- Duty Cycle: **33% @ 100 PSI**
- Max. Working Pressure: **150 PSI**
- Amp Draw: **29 Amps (12V)**
17 Amps (24V)
- Min. Ambient Temp: -40° F
- Max. Ambient Temp: 158° F
- Stainless Steel Braided Leader Hose
- Dimensions: 14.5" L x 6" W x 9.8" H
- Net Weight: 18.5 lbs.

12-Volt & 24-Volt

PERFORMANCE DATA

PSI	12V		24V		BAR	12V		24V	
	CFM	A	CFM	A		LPM	A	LPM	A
0	3.00	15	3.00	10	0	85.0	15	85.0	10
10	2.75	18	2.68	11	1	76.0	20	73.0	12
20	2.61	20	2.47	12	2	69.0	22	67.0	14
30	2.47	23	2.37	14	3	63.0	25	62.0	15
40	2.30	24	2.26	15	4	56.5	25	58.0	16
50	2.15	25	2.12	15	5	54.0	27	55.0	16
60	2.01	26	2.01	16	6	50.5	28	51.0	16
70	1.94	27	1.98	16	7	46.5	29	48.0	17
80	1.84	28	1.87	16	8	42.5	28	43.0	17
90	1.73	28	1.77	16	9	38.0	28	40.0	17
100	1.66	29	1.70	17	10	34.0	26	34.0	16
110	1.55	28	1.59	17					
120	1.45	28	1.48	17					
130	1.34	28	1.38	17					
140	1.24	26	1.24	16					
150	1.17	26	1.17	16					

FILL RATES

2.5 Gallon Tank	Fill Rate 12V	Fill Rate 24V
0 to 105 PSI	1 min. 11 sec.	1 min. 12 sec.
0 to 145 PSI	1 min. 58 sec.	2 minutes
85 to 105 PSI	17 seconds	18 seconds
110 to 145 PSI	42 seconds	42 seconds
5.0 Gallon Tank	Fill Rate 12V	Fill Rate 24V
0 to 105 PSI	2 min. 30 sec.	2 min. 36 sec.
0 to 145 PSI	4 min. 7 sec.	4 min. 12 sec.
85 to 105 PSI	31 seconds	31 seconds
110 to 145 PSI	1 min. 11 sec.	1 min. 12 sec.

550C Specifications:

- 12-volt
- Permanent Magnetic Motor
- Duty Cycle: **100% @ 100 PSI**
- Max. Working Pressure: **150 PSI**
- Amp Draw: **29 Amps**
- Min. Ambient Temp: -40° F
- Max. Ambient Temp: 158° F
- Stainless Steel Braided Leader Hose
- Dimensions: 14.5" L x 7.25" W x 9.8" H
- Net Weight: 19 lbs.

PERFORMANCE DATA

PSI	CFM	A	BAR	LPM	A
0	2.93	15	0	83.0	15
10	2.72	18	1	75.0	20
20	2.60	20	2	68.5	22
30	2.45	23	3	62.5	24
40	2.26	23	4	56.0	25
50	2.12	25	5	53.0	27
60	1.96	26	6	50.0	28
70	1.91	27	7	46.0	28
80	1.82	28	8	42.0	28
90	1.70	28	9	38.0	27
100	1.64	29	10	34.0	26
110	1.54	28			
120	1.45	28			
130	1.34	28			
140	1.24	26			
150	1.17	26			

FILL RATES

2.5 Gallon Tank	Fill Rate
0 to 105 PSI	1 min. 16 sec.
0 to 145 PSI	2 min. 4 sec.
85 to 105 PSI	18 seconds
110 to 145 PSI	43 seconds
5.0 Gallon Tank	Fill Rate
0 to 105 PSI	2 min. 34 sec.
0 to 145 PSI	4 min. 10 sec.
85 to 105 PSI	32 seconds
110 to 145 PSI	1 min. 11 sec.

550C is not moisture and dust resistant. Must be mounted in an area that is not exposed to the elements. Features include a standard 3/8" stainless steel braided leader hose with inline check valve and extra long insulated wiring for simple installation.

*Must be used with a 150 PSI or lower pressure, non-adjustable pressure switch when used with an air tank.

550C Air Compressor P/N 55050



VIAIR Dual Performance Value Packs offer fast fill rates specifically meant to fill up to 10 gallons of reserve air to 200 PSI. Each Value Pack comes with the following quality bonus parts needed for a high quality air suspension installation:

Parts Included:

- (2) 380C Chrome Compressors (200 PSI capable)
- (2) Air Filter Assemblies
- (2) Remote Mount Brackets
- (2) Sets of Remote Mount Fittings
- (2) Sets of Spare Air Filter Elements
- (2) Leader Hose Clips
- (6) Air Line Clips with Included Hardware
- (8) Sets of Nuts, Bolts, Washers and Lock Washers (for compressor mounting)
- (1) One Heavy Duty Pressure Switch (165 PSI on, 200 PSI off)
- Remote Mount Air Line (For Remote Mount Filter Installation)

Pewter



Chrome



Dual 380C Air Compressor P/N 38002 (Pewter) P/N 38003 (Chrome)

Dual 380C Specifications:

- 12-volt
- Permanent Magnetic Motor
- Duty Cycle: **100% @ 100 PSI**
55% @ 200 PSI
- Max. Working Pressure: **200 PSI**
- Amp Draw: **32 Amps**
- Min. Ambient Temp: -40° F
- Max. Ambient Temp: 158° F
- Stainless Steel Braided Leader Hose
- Dimensions (Each): 9" L x 4" W x 7" H
- Net Weight: 16 lbs.

PERFORMANCE DATA

PSI	CFM	A	BAR	LPM	A
0	2.98	16	0	84.0	16
10	2.34	20	1	65.0	20
20	2.26	22	2	62.0	24
30	2.18	24	3	58.0	26
40	2.04	26	4	54.0	28
50	1.98	26	5	52.0	28
60	1.90	28	6	49.0	30
70	1.84	28	7	46.0	30
80	1.76	28	8	42.0	30
90	1.70	30	9	38.0	30
100	1.62	30	10	33.0	30
110	1.56	30	11	31.0	30
120	1.42	30	12	28.0	30
130	1.34	30	13	25.0	30
140	1.20	30	14	23.0	30
150	1.14	30			
160	1.10	32			
170	1.02	30			
180	0.96	30			
190	0.88	30			
200	0.80	30			

FILL RATES

2.5 Gallon Tank	Fill Rate
0 to 200 PSI	3 min. 13 sec.
165 to 200 PSI	53 seconds
5.0 Gallon Tank	Fill Rate
0 to 200 PSI	7 min. 11 sec.
165 to 200 PSI	2 min. 6 sec.



Dual 400C Specifications:

- 12-volt
- Permanent Magnetic Motor
- Duty Cycle: **33% @ 100 PSI**
- Max. Working Pressure: **150 PSI**
- Amp Draw: **51 Amps**
- Min. Ambient Temp: -40° F
- Max. Ambient Temp: 158° F
- Stainless Steel Braided Leader Hose
- Dimensions (Each): 9" L x 4" W x 7" H
- Net Weight: 16 lbs.

PERFORMANCE DATA

PSI	CFM	A	BAR	LPM	A
0	4.55	36	0	129.0	36
10	4.18	39	1	116.0	41
20	3.96	42	2	107.0	43
30	3.74	44	3	96.5	45
40	3.50	45	4	88.0	48
50	3.25	46	5	81.0	50
60	3.07	48	6	76.0	50
70	2.90	49	7	69.5	51
80	2.75	50	8	62.0	51
90	2.65	51	9	51.5	49
100	2.47	51	10	46.0	49
110	2.26	51			
120	2.05	50			
130	1.84	50			
140	1.70	49			
150	1.48	49			

FILL RATES

2.5 Gallon Tank	Fill Rate
0 to 145 PSI	1 min. 8 sec.
110 to 145 PSI	23 seconds
5.0 Gallon Tank	Fill Rate
0 to 145 PSI	2 min. 20 sec.
110 to 145 PSI	45 seconds



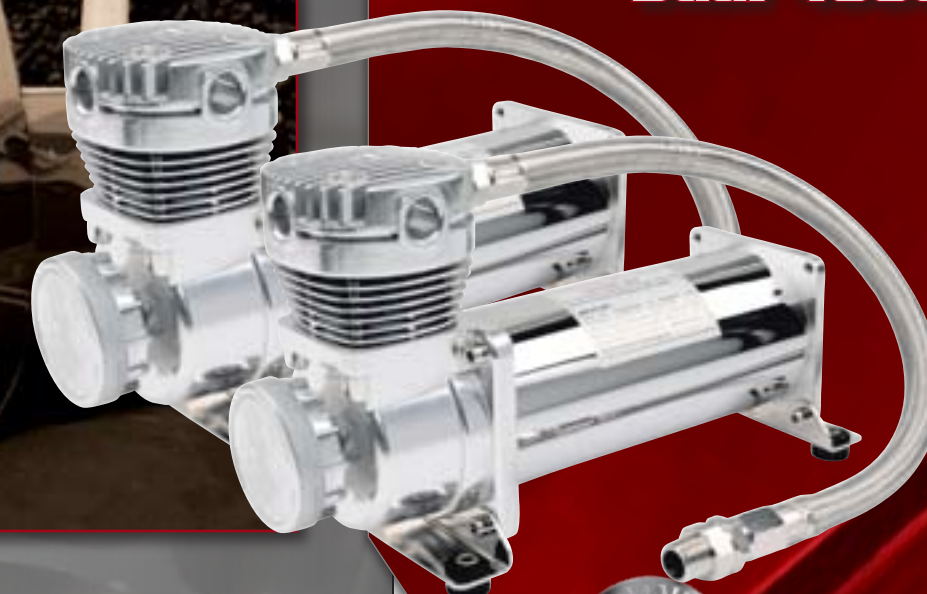
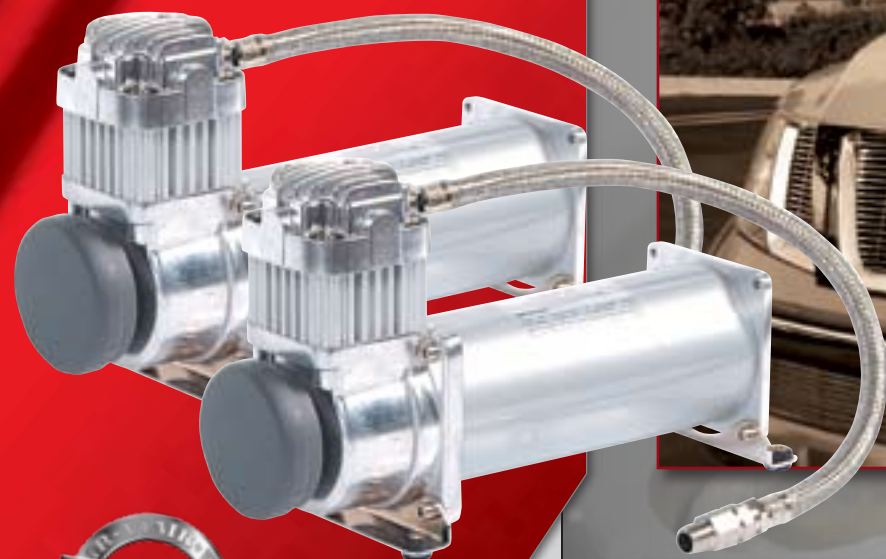
Parts Included:

- (2) 400C Chrome Compressors (150 PSI capable)
- (2) Air Filter Assemblies
- (2) Remote Mount Brackets
- (2) Sets of Remote Mount Fittings
- (2) Sets of Spare Air Filter Elements
- (2) Leader Hose Clips
- (6) Air Line Clips with Included Hardware
- (8) Sets of Nuts, Bolts, Washers and Lock Washers (for compressor mounting)
- (2) Heavy Duty 40-Amp Relays
- (1) One Heavy Duty Pressure Switch (110 PSI on, 145 PSI off)
- Remote Mount Air Line (For Remote Mount Filter Installation)

Chrome



Dual 400C Air Compressor P/N 40013 (Chrome)



VIAIR Dual Performance Value Packs offer fast fill rates specifically meant to fill up to 10 gallons of reserve air to 150 PSI. Each Value Pack comes with the following quality bonus parts needed for a high quality air suspension installation:

Parts Included:

- (2) 450C Silver Compressors (150 PSI capable)
- (2) Air Filter Assemblies
- (2) Remote Mount Brackets
- (2) Sets of Remote Mount Fittings
- (2) Sets of Spare Air Filter Elements
- (2) Leader Hose Clips
- (6) Air Line Clips with Included Hardware
- (8) Sets of Nuts, Bolts, Washers and Lock Washers (for compressor mounting)
- (2) Heavy Duty 40-Amp Relays
- (1) One Heavy Duty Pressure Switch (110 PSI on, 145 PSI off)
- Remote Mount Air Line (For Remote Mount Filter Installation)

Silver



P/N 45012 Dual 450C Air Compressor

Dual 450C Specifications:

- 12-volt
- Permanent Magnetic Motor
- Duty Cycle: **100% @ 100 PSI**
- Max. Working Pressure: **150 PSI**
- Amp Draw: **40 Amps**
- Min. Ambient Temp: -40° F
- Max. Ambient Temp: 158° F
- Stainless Steel Braided Leader Hose
- Dimensions (Each): 11.25" L x 4" W x 6.75" H
- Net Weight: 19.5 lbs.

PERFORMANCE DATA

PSI	CFM	A	BAR	LPM	A
0	3.28	26	0	93.0	26
10	3.04	29	1	82.0	30
20	2.79	31	2	76.0	31
30	2.65	31	3	71.0	35
40	2.54	34	4	66.5	36
50	2.44	36	5	61.5	38
60	2.33	37	6	56.0	39
70	2.19	38	7	52.0	40
80	2.05	38	8	48.0	40
90	1.94	39	9	43.0	40
100	1.87	40	10	39.5	40
110	1.77	40			
120	1.66	40			
130	1.52	40			
140	1.41	40			
150	1.31	40			

FILL RATES

2.5 Gallon Tank	Fill Rate
0 to 145 PSI	1 min. 30 sec.
110 to 145 PSI	28 seconds
5.0 Gallon Tank	Fill Rate
0 to 145 PSI	3 min. 10 sec.
110 to 145 PSI	1 min. 5 sec.



Dual 480C Specifications:

- 12-volt
- Permanent Magnetic Motor
- Duty Cycle: **100% @ 100 PSI**
50% @ 200 PSI
- Max. Working Pressure: **200 PSI**
- Amp Draw: **40 Amps**
- Min. Ambient Temp: -40° F
- Max. Ambient Temp: 158° F
- Stainless Steel Braided Leader Hose
- Dimensions (Each): 11.5" L x 4.3" W x 6.5" H
- Net Weight: 22 lbs.

PERFORMANCE DATA

PSI	CFM	A	BAR	LPM	A
0	3.53	21	0	100	20
10	3.10	25	1	92	26
20	3.00	29	2	86	30
30	2.86	31	3	81	34
40	2.75	33	4	77	36
50	2.64	34	5	71	38
60	2.55	36	6	66	38
70	2.43	36	7	63	38
80	2.26	37	8	59	40
90	2.19	38	9	54	40
100	2.08	38	10	50	38
110	1.98	39	11	46	38
120	1.84	39	12	41	38
130	1.73	39	13	36	36
140	1.66	39	14	31	36
150	1.55	39			
160	1.52	39			
170	1.41	38			
180	1.34	38			
190	1.27	37			
200	1.17	36			

FILL RATES

2.5 Gallon Tank	Fill Rate
0 to 200 PSI	2 min. 22 sec.
165 to 200 PSI	31 seconds
5.0 Gallon Tank	Fill Rate
0 to 200 PSI	5 min. 2 sec.
165 to 200 PSI	1 min. 15 sec.
10 Gallon Tank	Fill Rate
0 to 200 PSI	10 min. 10 sec.
165 to 200 PSI	2 min. 36 sec.



Parts Included:

- (2) 480C Chrome Compressors (200 PSI capable)
- (2) Air Filter Assemblies (Heavy Duty Cast Aluminum)
- (2) Remote Mount Brackets
- (2) Sets of Remote Mount Fittings
- (2) Sets of Spare Air Filter Elements
- (1) Heavy Duty Tube Style Fuse Holder (Up to 60 amp fuse)
- (2) Leader Hose Clips
- (6) Air Line Clips with Included Hardware
- (8) Sets of Nuts, Bolts, Washers and Lock Washers (for compressor mounting)
- (1) One Heavy Duty Pressure Switch (165 PSI on, 200 PSI off)
- Remote Mount Air Line (For Remote Mount Filter Installation)

Pewter



Chrome



P/N 48012 [Pewter] P/N 48032 [Chrome] Dual 480C Air Compressor

Air Source Kits

Introducing two new kits that come with either a 275C VIAIR compressor mounted on a 1.5 gallon air tank with a pre-wired 90/120 PSI pressure switch or a 280C VIAIR compressor mounted on a 2 gallon air tank and with a 110/145 PSI pressure switch. Both kits come with the compressor, a drain cock, safety valve, compression fitting, and pressure switch pre-installed & wired!

All that's left to do is connect the pressure switch to fused power, make a solid ground and connect an air line to the existing compression fitting on the air tank.

Kits Come Pre-Assembled with the Following Components:



Air Line Out



Safety Valve



Pressure Switch



Drain Cock

1.5 Gallon Air Source Kit
P/N 20003

2 Gallon Air Source Kit
P/N 20005

20003 Specifications:

- 12-volt
- Permanent Magnetic Motor
- Duty Cycle: **25% @ 100 PSI**
- Max. Working Pressure: **150 PSI**
- Amp Draw: **18 Amps**
- Min. Ambient Temp: -40°F
- Max. Ambient Temp: 158°F
- Stainless Steel Braided Leader Hose
- Dimensions: 15" L x 6" W x 13" H
- Net Weight: 13.75 lbs.



1.5 Gallon Tank		Fill Rate
0 to 120 PSI		2 min. 15 sec.
90 to 120 PSI		35 seconds

PERFORMANCE DATA					
PSI	CFM	A	BAR	LPM	A
0	2.03	10	0	57.5	10
10	1.17	12	1	32.0	13
20	1.11	13	2	30.0	14
30	1.04	15	3	28.5	16
40	1.01	15	4	26.5	16
50	0.97	16	5	24.5	17
60	0.92	16	6	22.5	17
70	0.88	17	7	21.5	18
80	0.83	17	8	20.0	18
90	0.79	17	9	18.5	18
100	0.76	18	10	17.0	17
110	0.72	18			
120	0.69	18			
130	0.65	18			
140	0.62	17			
150	0.57	17			



2.0 Gallon Tank		Fill Rate
0 to 145 PSI		4 min. 15 sec.
110 to 145 PSI		1 min. 15 sec.

PERFORMANCE DATA					
PSI	CFM	A	BAR	LPM	A
0	1.31	8	0	37.0	8
10	1.29	9	1	33.0	10
20	1.15	10	2	31.5	11
30	1.11	12	3	29.0	13
40	1.04	13	4	26.5	14
50	0.99	13	5	24.0	14
60	0.92	14	6	22.0	15
70	0.87	14	7	21.0	15
80	0.81	15	8	19.5	16
90	0.76	15	9	17.5	15
100	0.74	15	10	15.5	15
110	0.71	15			
120	0.67	16			
130	0.62	15			
140	0.57	15			
150	0.51	15			

20005 Specifications:

- 12-volt
- Permanent Magnetic Motor
- Duty Cycle: **30% @ 100 PSI**
- Max. Working Pressure: **150 PSI**
- Amp Draw: **16 Amps**
- Min. Ambient Temp: -40°F
- Max. Ambient Temp: 158°F
- Stainless Steel Braided Leader Hose
- Dimensions: 19" L x 6" W x 13.75" H
- Net Weight: 17.15 lbs.

Air Accessories Electrical



Pressure Switch

Part No.	Description
90100	90 PSI on, 120 PSI off
90101	85 PSI on, 105 PSI off
90102	110 PSI on, 145 PSI off
90103	165 PSI on, 200 PSI off

*Tolerance is +/-5% of specified pressures. For 12-volt and 24-volt systems up to 20 amps. Comes with 1/8" NPT male port fitting.



Sealed Pressure Switch

Part No.	Description
90217	110 PSI on, 145 PSI off (30 Amp)
90218	140 PSI on, 175 PSI off (20 Amp)
90219	140 PSI on, 175 PSI off (30 Amp)
90220	165 PSI on, 200 PSI off (20 Amp)
90221	165 PSI on, 200 PSI off (30 Amp)
90223	90 PSI on, 120 PSI off (30 Amp)

*Tolerance is +/-5% of specified pressures. For 12-volt and 24-volt systems. Comes with 1/8" NPT male port fitting and 12 gauge (30 amp) or 16 gauge (20 amp) 5.25" leads.



Pressure Switch with Built-in Relay

Part No.	Description
90110	85 PSI on, 105 PSI off
90111	110 PSI on, 150 PSI off
90113	90 PSI on, 120 PSI off
90118	165 PSI on, 200 PSI off

*Tolerance is +/-5% of specified pressures. For 12-volt systems only up to 40 amps. Moisture Resistant and tested to last over 10,000 cycles. They measure 4.25" L x 2.25" W x 2.25" H and come with 1/8" male NPT port fitting. Leads are pre-fitted with insulated 1/4" male push-to-connect terminals that are clearly marked.



20 FT. Freeze Resistant Wire

Part No.	Description
92915	12 gauge
92917	16 gauge
92918	16 gauge with 20-amp inline fuse holder

*-40°F to 158°F



40 Amp Relay

Part No.	Description
93940	40-amp relay (40a - 12v)
93943	40-amp relay (40a - 24v)



Insulated Terminals

Part No.	Description
92920	1/4" female / 12 gauge
92921	1/4" female / 16 gauge
92922	1/4" male / 12 gauge
92923	1/4" male / 16 gauge

*5 pieces



Fuse Holder

Part No.	Description
92945	20 amp / 16 gauge
92946	30 amp / 12 gauge

*Moisture resistant



Heavy Duty Fuse Holder

Part No.	Description
92952	60-amp / 8 gauge

*Moisture resistant



Fuses

Part No.	Description
92931	20-amp fuse
92932	30-amp fuse
92933	40-amp fuse

*5 pieces

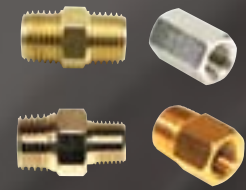
Air Accessories

Fittings / Hoses



Air Source Relocation Kit

Part No.	Description
90007	Contains 1/4" NPT female quick connect coupler, 1/4" NPT male stud, two 1/4" NPT male compression fittings, 15 ft. air line tubing, 3 air line clips, and 4" continuous grommet.



Reducers

Part No.	Description	Finish
92810	1/4" male to 1/4" male	Gold
92811	1/4" male to 1/8" male	Nickel
92812	1/4" male to 1/8" female	Gold
92840	3/8" male to 1/4" male	Nickel
92841	3/8" male to 1/4" female	Nickel
92842	3/8" female to 1/4" male	Nickel
92843	3/8" female to 1/4" female	Nickel

*NPT Fittings



1/4" NPT Safety Valve

Part No.	Description
92145	145 PSI coded
92155	155 PSI coded
92175	175 PSI coded
92250	250 PSI coded



Inflation Valve

Part No.	Description
92839	Inflation Valve

*For 1/4" air line



Compression Fitting

Part No.	Description
92838	1/8" NPT female

*For 1/4" air line



Drain Cock

Part No.	Description
92835	1/4" NPT



Check Valve

Part No.	Description
92823	1/8" male to 1/8" female O.D. 12mm
92824	1/8" male to 1/8" female O.D. 16mm
92825	1/8" female to 1/8" male O.D. 16mm
92831	1/4" female to 1/4" male
92832	1/4" male to 1/4" female
92833	3/8" female to 3/8" male



T-Fitting

Part No.	Description
92821	1/4" female x 1/4" female x 1/8" female
92846	1/4" male x 1/4" female x 1/8" female
92848	1/4" male x 1/4" female x 1/4" female

*NPT Fittings



4-Way Fitting

Part No.	Description
92855	1/4" male x 1/4" female x 1/4" female x 1/8" female

*NPT Fittings



Stainless Steel Braided Leader Hoses

Part No.	Description	Length
Leader Hoses with Check Valves		
92791	3/8" fitting with check valve (3/8" male to 3/8" male swivel)	24"
92793	1/4" fitting with check valve (1/4" male to 1/4" male swivel)	21"
92805	1/4" fitting with check valve (1/4" male to 1/4" male swivel)	36"
92807	1/8" male to 1/4" male swivel with check valve	20"

Leader Hoses without Check Valves

92792	3/8" fitting (3/8" male to 3/8" male swivel)	24"
92795	3/8" fitting (3/8" female to 3/8" male swivel)	24"
92801	1/8" male to 1/4" female swivel	18"
92802	1/4" male to 1/4" female swivel	18"
92803	1/8" male to 1/4" male swivel	18"
92804	1/4" male to 1/4" male swivel	18"
92809	1/4" male to 1/4" male swivel	36"

Air Accessories

Gauges / Filters



1.5" Single Needle Gauge - 160 PSI

Part No.	Description
90084	White Face
90085	Black Face



2.0" Dual Needle Gauge - 160 PSI

Part No.	Description
90082	Black Face Illuminated
90083	White Face Illuminated



2.0" Single Needle Gauge - 160 PSI

Part No.	Description
90087	White Face Illuminated
90088	Black Face Illuminated



2.0" Dual Needle Gauge - 220 PSI

Part No.	Description
90080	Black Face Illuminated
90081	White Face Illuminated



Remote Inlet Air Filter Assembly

Part No.	Description
92621	1/4" NPT x 1/4" tube
92622	1/4" NPT x 3/8" tube
92625	3/8" NPT x 1/2" tube



Metal Remote Inlet Air Filter Assembly

Part No.	Description
92629	3/8" NPT x 1/2" tube
92631	1/4" NPT x 3/8" tube



2-Stage Air Filter Elements

Part No.	Description	Application
92626	Qty. 5	All Plastic Housings
92628	Qty. 4	1/4" or 3/8" NPT Metal Housings
92595	Qty. 4	1/2" NPT Metal Housings



Direct Inlet Air Filter Assembly

Part No.	Description
92623	1/4" NPT
92624	3/8" NPT



Metal Direct Inlet Air Filter Assembly

Part No.	Description
92627	3/8" NPT
92630	1/4" NPT
92635	1/2" NPT



30 Ft. Extension Hose

Part No.	Description
00030	0-200 PSI Close-ended Quick Connect Coupler



1/4" Quick Connect Coupler

Part No.	Description
92813	1/4" NPT male
92814	1/4" NPT female



1/4" Quick Connect Stud

Part No.	Description
92815	1/4" NPT male
92818	1/4" NPT female



Tire Inflation Gun

Part No.	Description
00041	Tire Inflation Gun

*Normally-closed air chuck



Blow Gun

Part No.	Description
00045	Blow Gun

*Comes pre-assembled with 1/4" Quick Connect Stud

Q: Does a new compressor have to be broken in?

A: No, they do not. Typically after an install, you should power up the system from 0 to whatever the cut-off pressure is and check for any leaks that may be present.

Q: How do you check for leaks?

A: You can check for leaks by putting soap and water solution where the fitting connections are. If there are bubbles present that grow in size, then there are leaks.

Q: Does it matter where I install my compressors on my vehicle?

A: This depends on several factors such as available space, whether or not the compressor is of a sealed or vented type, as well as personal preference and aesthetics. Make sure to utilize the rubber insulators to keep vibration and noise to a minimum.

Q: How can I tell whether the compressor is sealed or non-sealed?

A: Manufacturers will normally specify if a compressor is sealed against moisture and dust, and in many cases, you can tell the difference by simply inspecting the compressor. If you see vents, cracks, or holes in the motor housing, then the compressor is not sealed and must be kept away from dust and moisture.

Q: Why is it important to have a sealed and moisture-resistant compressor?

A: The preference of a sealed-type compressor is due to the fact that in mobile pneumatics, compressors are likely to be exposed to outside elements.

Q: Is it possible to mount the compressor sideways? Must it be mounted with the cylinder upright?

A: Yes, you can mount our compressors in any direction or position because they are oil-less. The only position we do not recommend is an upside-down mount, since heat tends to travel upward, and does not dissipate well in the motor housing.

Q: If I mount my compressor sideways, like on the frame rail of my truck, is there anything I should be careful of when doing this?

A: If you mount your compressor sideways to the frame rail, you should periodically check to make sure that your compressor is mounted securely. Use a thread-locking compound to keep the bolts from backing off and causing the compressor to be mounted loosely.

Q: What is the largest air tank recommended for your compressors?

A: We recommend up to a 5 gallon tank for the 325 and higher series compressors.

Q: Is it possible to hook up more than one compressor to a single pressure switch?

A: Yes, it is possible to use one pressure switch on more than one compressor. You should always run a relay if you want to hook up multiple compressors to a single switch. You should check the amp draw on the switch first, and then you'll know how many compressors you can hook up to one switch.

Q: Can I use an adjustable pressure switch with my compressor?

A: We don't recommend that you use adjustable pressure switches with any VIAIR compressor. If you use an adjustable pressure switch, you can set the pressure switch higher than the maximum pressure that is rated for your compressor, or you may exceed the maximum rated working pressure for your air supply tank. Doing so will immediately void your warranty.

Q: Is amp draw of the compressor something I need to be concerned with?

A: Yes, the lower the amp draw, the better the compressor is. As a rule of thumb, the maximum amperage that a compressor should require is 30amps.

Q: Is there a way to increase the flow rate of my compressors, and improve my compressors' performance as well?

A: When using an onboard air system with multiple compressors such as P/N 38002, always plumb each compressors' leader hose to separate tank ports. Doing so will increase flow rate by up to 20%, which will also increase your system's level of performance.



VIAIR Compressor Application Guide

Compressor Series	Duty Cycle	Working Pressure	Moisture and Dust Resistant	Recommended Tank Size	Recommended Pressure Switch
063 Series	20%	105 PSI	----	0.5 Ga. to 1.0 Ga.	85/105 PSI or 55/80 PSI
065 Series	15%	80 PSI	----	0.5 Ga. to 1.0 Ga.	-----
080 Series	9%	120 PSI	----	0.5 Ga. to 1.0 Ga.	85/105 PSI or 90/120 PSI
090 Series 092 Series 095 Series	9%	120 PSI	----	0.5 Ga. to 1.0 Ga.	85/105 PSI or 90/120 PSI
097 Series 098 Series	10%	130 PSI	----	0.5 Ga. to 1.0 Ga.	85/105 PSI or 90/120 PSI
100 Series	15%	130 PSI	Yes	0.5 Ga. to 1.0 Ga.	85/105 PSI or 90/120 PSI
275 Series	25%	150 PSI	Yes	0.5 Ga. to 3.0 Ga.	85/105 PSI or 110/145 PSI
280 Series	30%	150 PSI	Yes	2.5 Ga. to 5 Ga.	85/105 PSI or 110/145 PSI
325 Series	33%	150 PSI	Yes	2.5 Ga. to 5 Ga.	85/105 PSI or 110/145 PSI
330 Series	100%	150 PSI	Yes	2.5 Ga. to 5 Ga.	85/105 PSI or 110/145 PSI
350 Series	100%	150 PSI	Yes	2.5 Ga. to 5 Ga.	85/105 PSI or 110/145 PSI
380 Series	100%	200 PSI	Yes	2.5 Ga. to 5 Ga.	110/145 PSI or 165/200 PSI
400 Series	33%	150 PSI	Yes	2.5 Ga. to 5 Ga.	85/105 PSI or 110/145 PSI
420 Series	33%	150 PSI	Yes	2.5 Ga. to 5 Ga.	85/105 PSI or 110/145 PSI
450 Series	100%	150 PSI	Yes	2.5 Ga. to 5 Ga.	85/105 PSI or 110/145 PSI
460 Series	100%	150 PSI	Yes	2.5 Ga. to 5 Ga.	85/105 PSI or 110/145 PSI
480 Series	100%	200 PSI	Yes	2.5 Ga. to 5 Ga.	110/145 PSI or 165/200 PSI
500 Series	33%	150 PSI	Yes	2.5 Ga. to 5 Ga.	85/105 PSI or 110/145 PSI
550 Series	100%	150 PSI	No	2.5 Ga. to 5 Ga.	85/105 PSI or 110/145 PSI

Duty Cycle Reference Chart

Duty Cycle: 100 PSI @ 72° F	Max. Run Time / Min. Rest Time
10% Duty Cycle	3 Min. On / 27 Min. Off
15% Duty Cycle	6 Min. On / 34 Min. Off
20% Duty Cycle	8 Min. On / 32 Min. Off
25% Duty Cycle	10 Min. On / 30 Min. Off
30% Duty Cycle	13 Min. On / 30 Min. Off
33% Duty Cycle	15 Min. On / 30 Min. Off
100% Duty Cycle	Continuous Duty @ 100 PSI @ 72° F

All VIAIR compressors are tested at an ambient temperature of 70 degrees Fahrenheit, with a supply voltage of 13.8 volts for 12-volt models and 24 volts for 24-volt models. It is recommended that you always operate VIAIR compressors with a vehicle's engine running, providing charging voltage to the compressors for best performance.

Products protected by:
 U.S. Pat. No. D,470,509; U.S. Pat. No. D,520,025;
 U.S. Pat. No. D,529,051; U.S. Pat. No. D,534,925;
 U.S. Pat. No. 6,279,599; U.S. Pat. No. 6,716,003
 and/or U.S. Pat. No. 7,001,156

Compressor Duty Cycle

Duty cycle refers to the amount of time a compressor can be operated in a given time period, at 100 PSI, at a standard ambient temperature of 72° F. Duty cycle is commonly expressed in percentage format as:

Compressor on time ÷ (on time + off time) = Duty Cycle %.

For example, a compressor that is rated for 25% duty cycle means that the compressor can be operated for:
10 minutes on and 30 minutes off =
10 min. ÷ (10 min. + 30 min.) =
10 min. / 40 min. = 25% duty cycle.